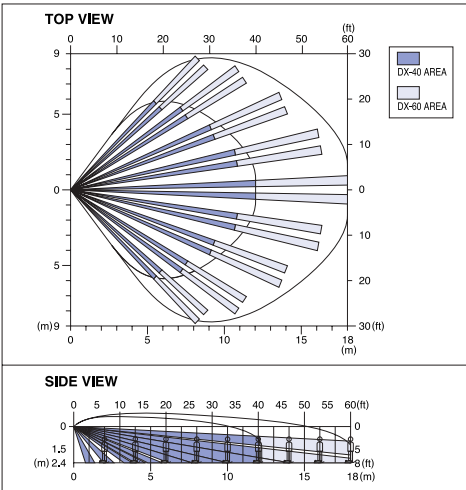


DX-40/60PLUS Enhanced Model



- Separate Relay Output for Automatic Trouble Monitoring
- Alarm Memory, Selectable Positive or Negative Input
- LED Remote On/Off Control Input from Control Panel

DETECTION AREA

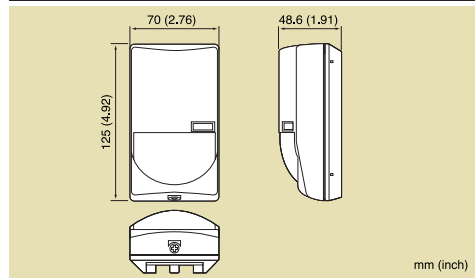


SPECIFICATIONS

DX-40/60	
Detection method	Passive Infrared and Microwave
Coverage	12m x 12m (40ft x 40ft) 85° wide 18m x 18m (60ft x 60ft) 85° wide
Detection zones	82 zones (PIR)
Mounting height	1.5 ~ 2.4m (5 ~ 8ft) 1.8 ~ 2.4m (6 ~ 8ft)
Sensitivity	28C (3.68F) at 0.6m/s (2ft/s), 12m (40ft) 28C (3.68F) at 0.6m/s (2ft/s), 18m (60ft)
Detectable speed	0.3 ~ 1.5m/s (1 ~ 5ft/s)
Alarm period	Approx. 2 sec
Alarm output	N.C., 28VDC 0.2A max.
Tamper switch	N.C., Open when cover is removed.
Warm-up period	Approx. 30 sec
LED indicator	Flicker during warm-up RED : ALARM, ALARM MEMORY and TROUBLE indicator YELLOW : MW and TROUBLE indicator GREEN : P.I.R. and TROUBLE indicator
Power input	9 ~ 18VDC
Current draw	12mA (normal), 35mA (max.) at 12VDC
RF interference	NO Alarm 30V / m
Operating temperature	-108C ~ +508C (148F ~ 1228F)
Environment humidity	95% max.
Microwave frequency	9.900GHz/10.525GHz 10.687GHz:(U.K.Version)
Weight	150g (5.3oz)
DX-40/60PLUS	
Current draw	17mA (normal), 40mA (max.) at 12VDC
D.L. terminal	LED remote control terminal
Alarm memory	Selectable positive and negative control
Trouble output	N.C., 28VDC 0.2A max.
Microwave frequency	9.900GHz/10.525GHz 10.687GHz:(U.K.Version)

④_{min} : DX-40, DX-60, DX-40PLUS, DX-60PLUS

DIMENSIONS



OPTIONAL BRACKETS



FA-1W
Wall Mount Bracket,
Adjustable ±45° Horizontally,
0-20° Vertically Downwards



FA-3
Compact Wall & Ceiling Mount Bracket
Adjustable ±45° Horizontally,
0-10° Vertically Downwards

*Specifications and design are subjected to change without prior notice
NOTE: This unit is designed to detect movement of an intruder and activate an alarm control panel. Being only a part of a complete system, we cannot accept responsibility for any damages or other consequences resulting from an intrusion. This product conforms to security product category of EMC Directive 89/336 EEC.



INTEGRATED PASSIVE INFRARED & MICROWAVE DETECTOR

DX-40/60 STANDARD 40/60 PLUS



Combining Quad Zone PIR Technology and Unique Microwave Detection

DX-40/60 models are the result of Optex's advanced research with PIR and Microwave technology. Unique advancements include "Microwave Area Shaping Technology" and Spherical Lens PIR technology with Quad Zone Logic. The design of this product offers easy, trouble-free installation in a compact and attractive housing. These models have features necessary to accommodate virtually any installation.



OPTEX CO., LTD. (ISO 9001 Certified by LRQA / ISO14001 Certified by JET)
5-8-12 Ogino, Chiba, Shiga 520-0101 Japan
TEL +81(0)77 579 8670 FAX +81(0)77 579 8190 <http://www.optex.co.jp/e>

OPTEX INCORPORATED (USA) <http://www.optexamerica.com>

OPTEX (EUROPE) LTD. (UK) <http://www.optexeuropa.com>
(ISO9001 Certified by NQA)

OPTEX SECURITY SAS (FRANCE) <http://www.optex-security.com>

OPTEX KOREA CO., LTD. (KOREA) <http://www.optexkorea.com>

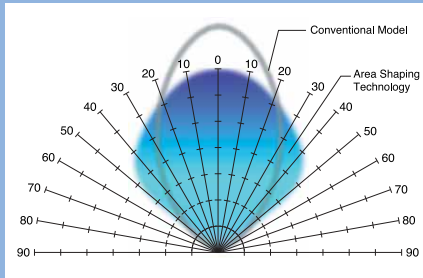
OPTEX SECURITY Sp. z o.o. (POLAND)

OPTEX (DONGGUAN) CO., LTD. Shenzhen office (CHINA) <http://www.optexchina.com>

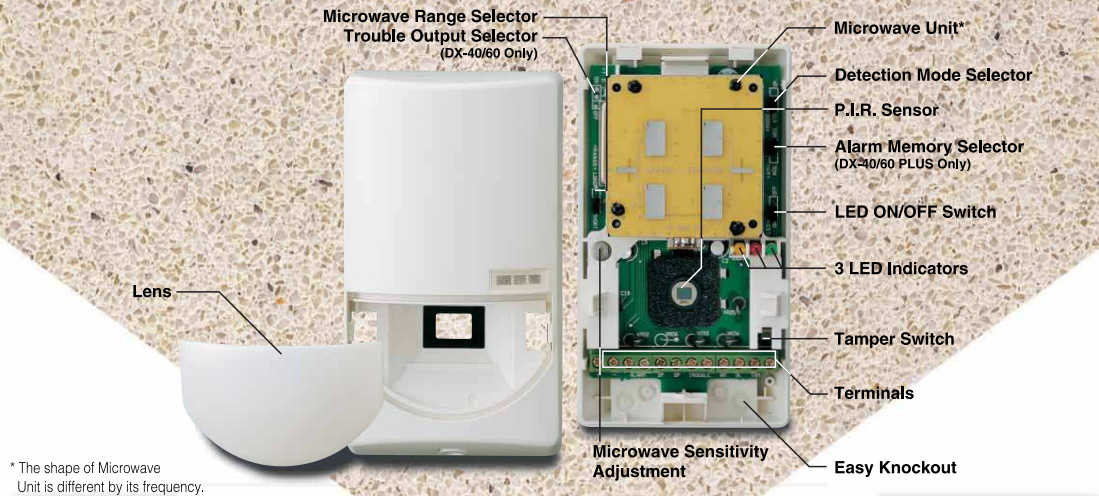
Take Care of the Environment This catalogue uses recycled paper No. 75020-07-909-0702

Optex Integrated Technology offers New Dimensions in Sensing Performance

Microwave Technology "Area Shaping Technology"



Optex Research and Development Department have created a breakthrough in Microwave Detection. The DX-40/60 reduce one of the biggest weak points of microwave detection, that is the penetration of walls and unwanted detection of movement outside the coverage area. In addition, the detection area has uniform sensitivity which minimises false activation's caused by spot movement in the detection area, i.e. small animals. The DX-40/60 are new dimensions in microwave technology.



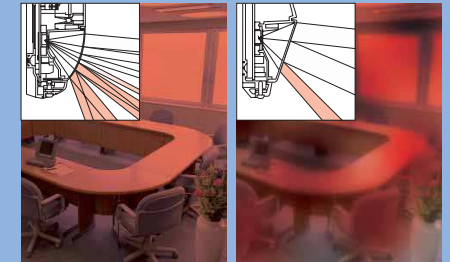
* The shape of Microwave Unit is different by its frequency.

OPEX Design and Mechanical Technology Quick and Easy Installation with Unique Compact Housing

■ Easy installation and wiring are engineered into this compact housing.

■ Easy Microwave Area Adjustment:
• Long or Short Distance Selector Switch
• Low, Medium or High Sensitivity Adjustment

Passive Infrared Technology Patented Quad Zone Logic with New Spherical Lens



By utilising Optex Advanced Optical Technology, the DX-40/60 create evenly distributed sensitivity throughout the detection area. Accurate focus creates even sensitivity and high resistance to spot temperature changes. Other detectors may have inconsistent detection creating hot spots (false alarm can occur) and dead spots (no detection). In addition, the New Spherical Lens contributes to a superior aesthetic appearance which end users will appreciate.

Integrated Microwave & Passive Infrared Technology

Improved Tolerance to Spot Movements

No Temperature or Light Disturbance

Re-Enforced with Electronic Analysis

No Penetration

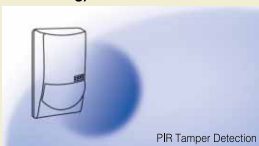
The DX-40/60 achieve Protection against False Alarms by utilising an integrated analysis of both PIR and Microwave signals.

Fail-Safe Technology — Automatic Trouble Monitoring

Passive Infrared does not detect through walls and is never affected by movement beyond these boundaries.

Anti-PIR Tamper Function (Patent Pending)

When PIR Detection fails (something near the detector blocking the field of view), a trouble output will generate via the * alarm output (selectable option with DX-40/60) and LED Display.



* DX-40/60 PLUS have separate Relay Output

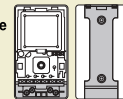
● Microwave Watchdog Circuit (Self-Checking Function)

When microwave operation fails, DX-40/60 automatically switch to single PIR operation in Enhanced Reliability Mode avoiding Missed Alarms.

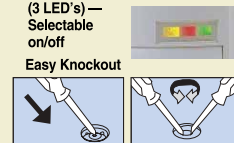
Trouble-Free Installation

Microwave Area Shaping allows for simple two step adjustment. By making minor adjustments to the Long or Short Range Selector and the Low, Medium, High Sensitivity Volume, the microwave can be shaped to match room size. This technology will not only reduce installation hassle but will reduce false alarms caused by penetration of walls by the microwave detector.

● Wiring Guide & Wide Space at Terminals — Increases ease of installation



● High Visibility LED Display (3 LED's) — Selectable on/off Easy Knockout

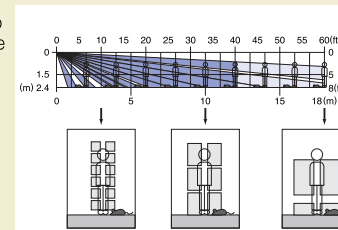


● Easy to operate Pin Switches (with instruction directly on the detector)

Detection Area Size Configuration

"Microwave Area Shaping Technology" and "Quad Zone Logic"

The Microwave Area can be easily shaped to fit the desired area and have even sensitivity. In addition, Quad Zone Logic in the PIR provides high tolerance to spot temperature changes and movements caused by small animals, heating vents, moving curtains and vibrations caused by big machinery.



No False Alarms due to Penetration through walls

Passive Infrared does not detect through walls and is never affected by movement beyond these boundaries.

No False Alarms by Spot Temperature Changes

DX-40/60 are not affected by spot temperature changes or by sunlight caused by the movement of sunlight through a detection area.

Enhanced Sealed Optics (Patent Pending)